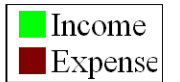
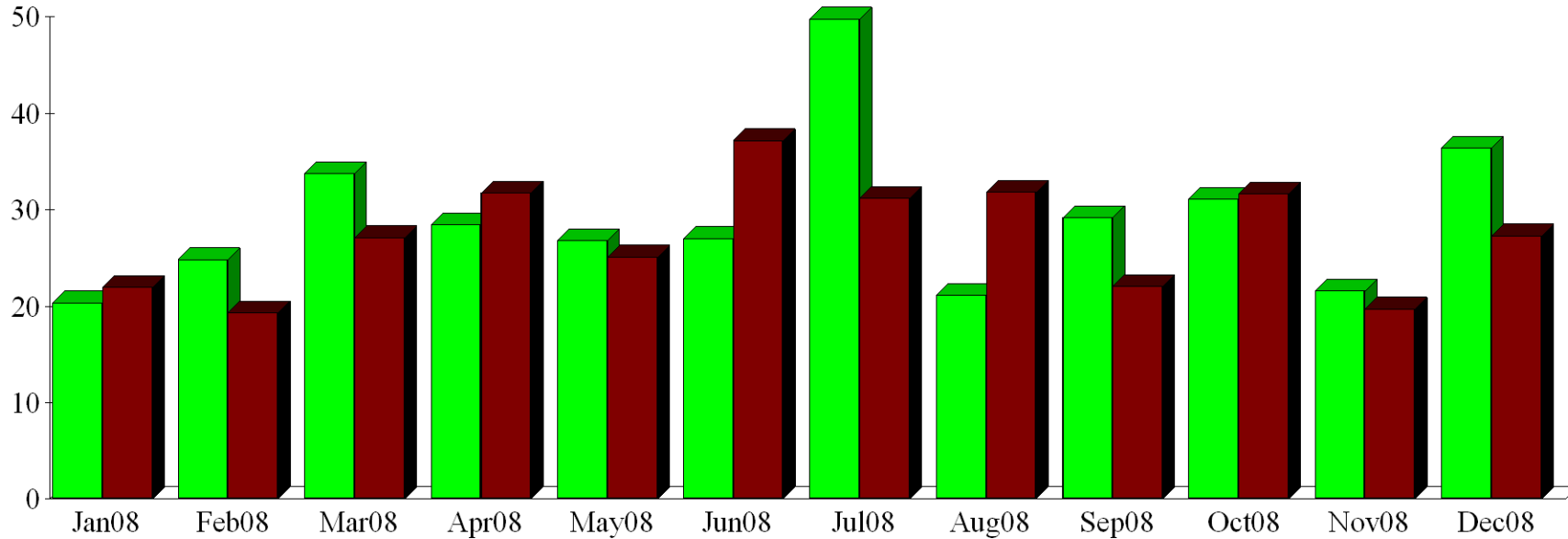


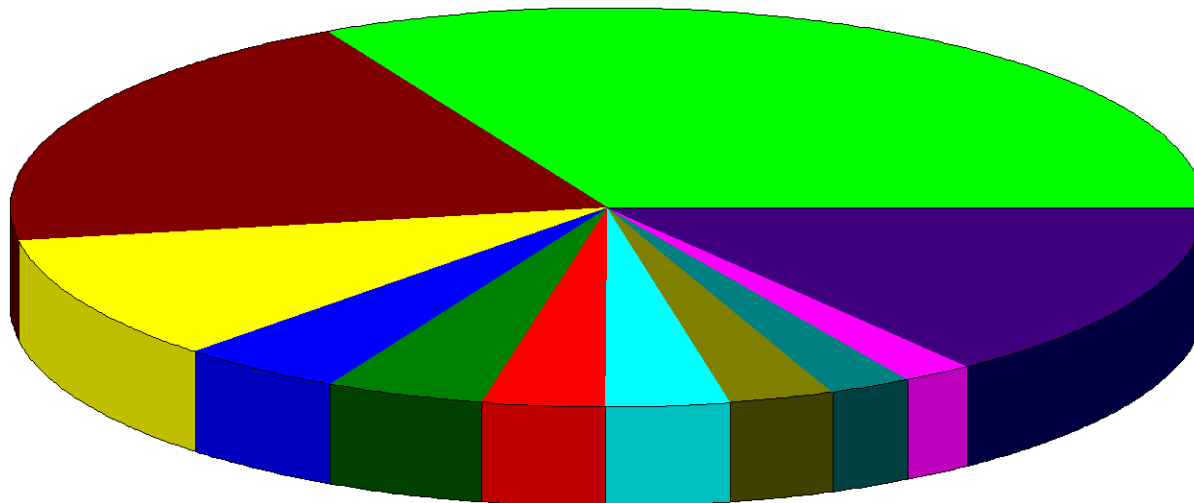
Income and Expense by Month
January through December 2008



\$ in 1,000's



Expense Summary
January through December 2008

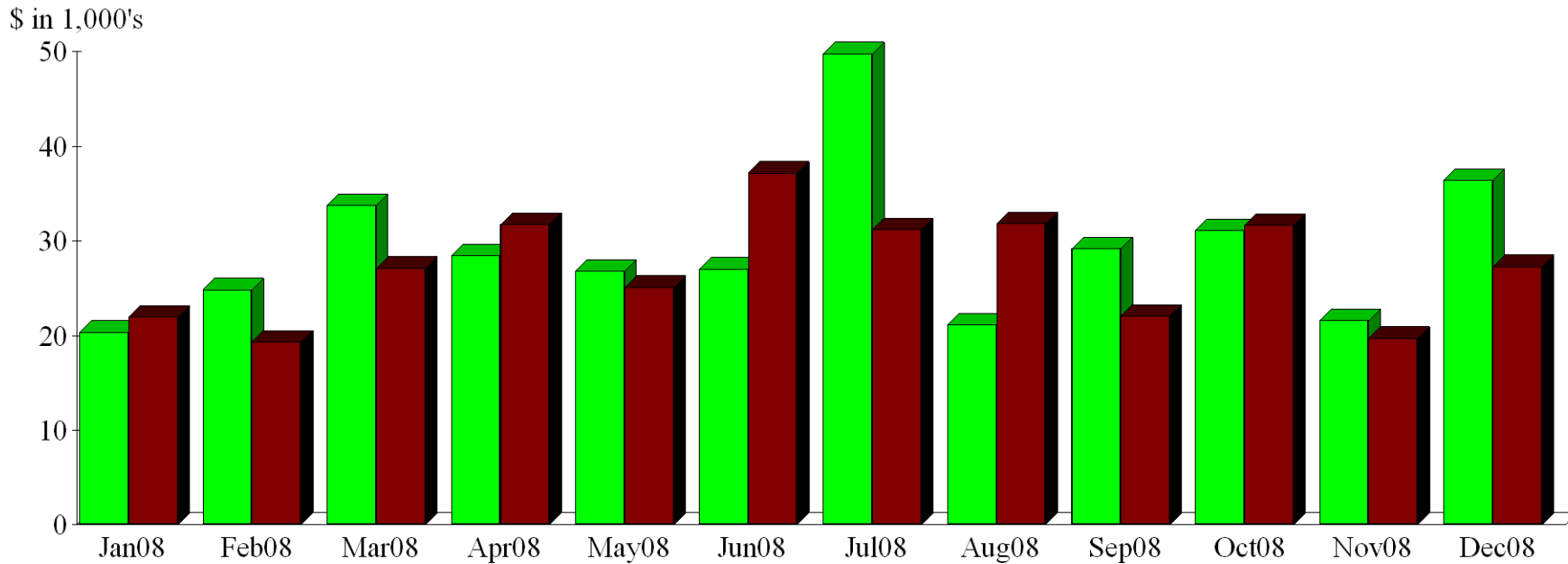


Mission Gifts	%32.94
Payroll Expenses	19.92
Utilities	10.29
Insurance	4.59
Honorariums Paid Out	4.43
Travel	3.50
Building Maintenance	3.37
Telephone	2.92
Outreach & Hospitality	2.29
Office Supplies	1.91
Other	13.83
Total	\$325,996.26

By Account

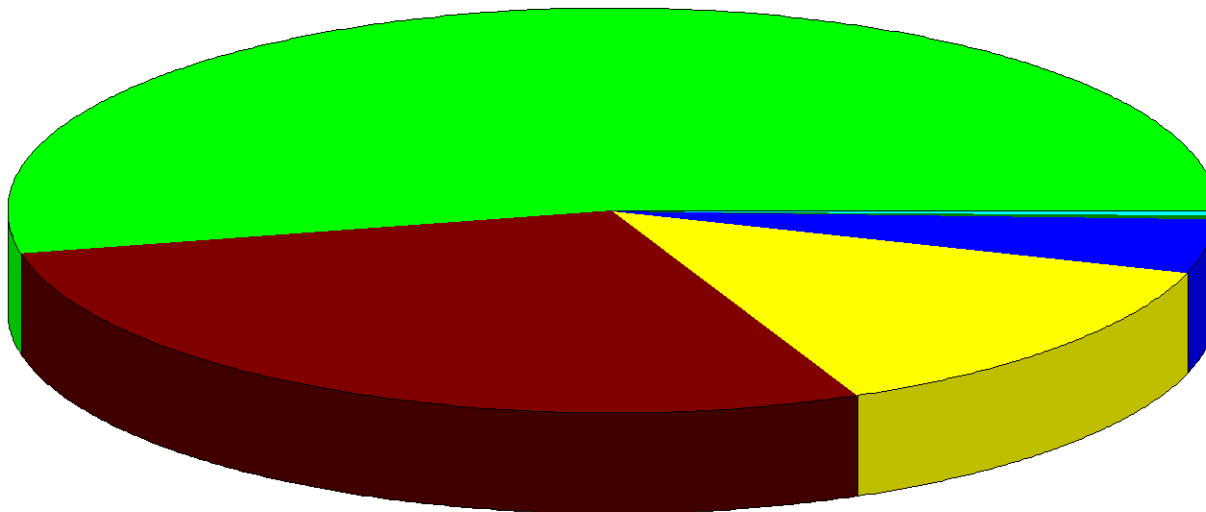
Income and Expense by Month
January through December 2008

Income
Expense



Income Summary
January through December 2008

Contributions - PHC	%53.61
Contributions - GFC	28.17
Missions	13.44
Designated	4.36
Reimbursements	0.37
Food / Helps Ministry	0.04
Youth	0.01
Total	\$350,246.45



By Account